

Fashion · Brightness · Innovation **W Hotel, Taipei**

Project Details:

The idea of architect: Tadashi Yamane

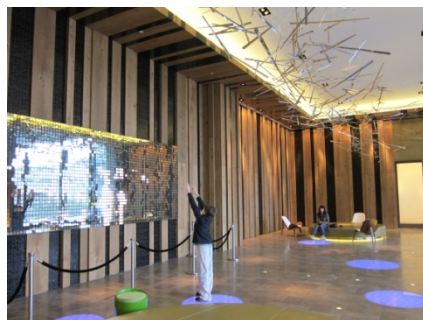
Interior design: GA Design International

Lighting Design: Chroma 33

Equipment: Lite-Puter Lighting Control System

Since the inauguration of the Le Méridien, the other international chain hotel, W Taipei, which also located in Xinyi commercial center, was officially opened in Valentine's Day (14th of Feb). Different from artistic Le Méridien, W Hotels is taking the fashion, bright and innovative style. W Taipei subverts many people the idea of the traditional hotel.

W Taipei adopts an interactive light installation which is designed of rAndom International named "You Fade to Light." In 2009 rAndom International was commissioned by the Philips Lumiblade team to create it. "You Fade To Light" allows the audience to engage with the light itself intuitively and in a physical way.



W Taipei organized various activities every month, including music performance, gourmet feast, rave party,





contemporary design exhibition...and so on. Lite-Puter lighting control system features central controlled, built-in astronomical clock and timer function, not only can convert the lighting effect to the different atmosphere according to the different theme activities, but also can execute scenes automatically on specific festival. The fantastic carnivals staged on W Taipei every day.

International chain hotels have been opening in Taipei in the heart of downtown “Xinyi commercial center” sequentially. The Grand Hyatt Taipei was opened 20 year ago, Le Méridien Taipei was opened in December, 2010 and W Taipei was opened recently. What’s the common? They all adopt Lite-Puter lighting control system to reduce cost, save energy, economize labor and satisfy precious lighting requirement. In Taiwan, Lite-Puter is the biggest dimmer designer and manufacture. With over 30 years experience, our specialty and persistence to quality is the best guarantee for our customers.