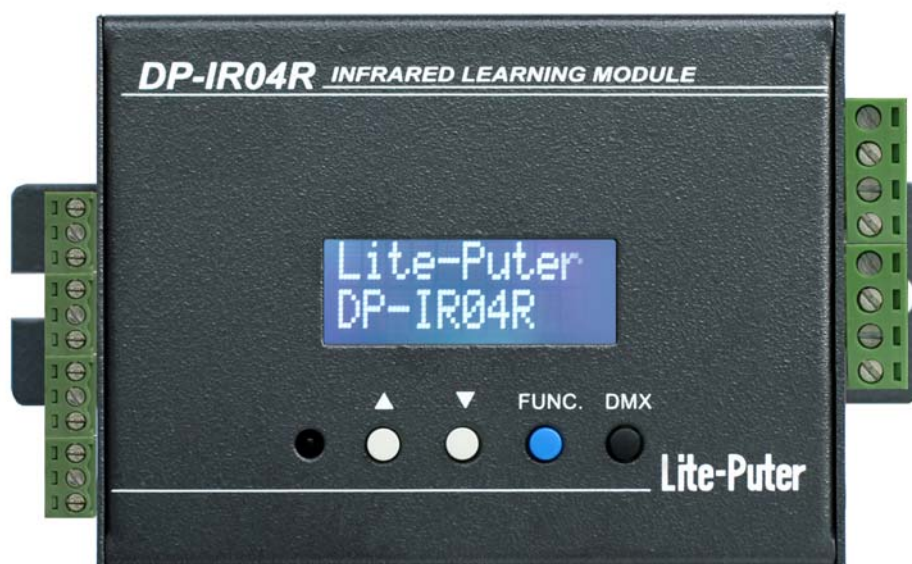


# DP-IR04R

## IR Learning Module

### 【User Manual】



**Lite-Puter Enterprise Co., Ltd**

Website : [www.liteputer.com.tw](http://www.liteputer.com.tw)

E-mail : [sales@liteputer.com.tw](mailto:sales@liteputer.com.tw)

## Index

CHAPTER ONE INTRODUCTION .....	2
1-1 FEATURE.....	2
1-2 SPECIFICATION .....	2
1-3 DIMENSION.....	3
1-4 PANEL INTRODUCTION.....	3
1-5 SYSTEM DIAGRAM .....	4
CHAPTER TWO FUNCTION .....	5
2-1 ID SETTING .....	5
2-2 ZONE SETTING .....	5
2-3 IR LEARNING ON/OFF .....	6
2-4 SCENE SETTING .....	7
2-5 SCENE SYNCHRONIZATION ON/OFF.....	8
2-6 SENT IR CODE.....	10
CHAPTER THREE DP-IR04R'S CONTROL SOFTWARE INTRODUCTION.....	12
3-1 CONTROL SOFTWARE INSTALLATION .....	12
3-2 DEVICE DRIVER INSTALLATION.....	16
3-3 CONNECTION BETWEEN DEVICE AND CONTROL SOFTWARE .....	20
3-4 CONTROL SOFTWARE MENU INTRODUCTION .....	21
3-5 CONTROL SOFTWARE MENU INTRODUCTION .....	22
3-6 SCENE SETTING .....	23
3-7 IR CODE SETTING .....	24
3-8 UPLOAD & DOWNLOAD IR CODE .....	26
3-9 SEND IR CODE.....	26
GUARANTEE .....	27

## Chapter One Introduction

### 1-1 Feature

- Can record 2048 IR codes. [BANK (saving space, 16 in total)×128 IR codes in each BANK=2048 IR codes]
- Can save 100 scenes and each of them can include 16 IR codes.
- 4 IR send ports.
- Can do the setting through PC on control software.
- Can work with ECP series control panels.
- LCD display.

### 1-2 Specification

- Power supply : DC-12V (500mA)
- Protocol: DMX-512/RS-485
- Angle: 30°; wavelength:850nm
- Signal input connector: 4PIN green terminal 5.0mm
- Signal output connector: 4 groups of 3PIN green terminal 3.5mm
- Dimension : 131.5(W)X 76(H)X 36.2(D)mm
- Weight : 360g

### 1-3 Dimension

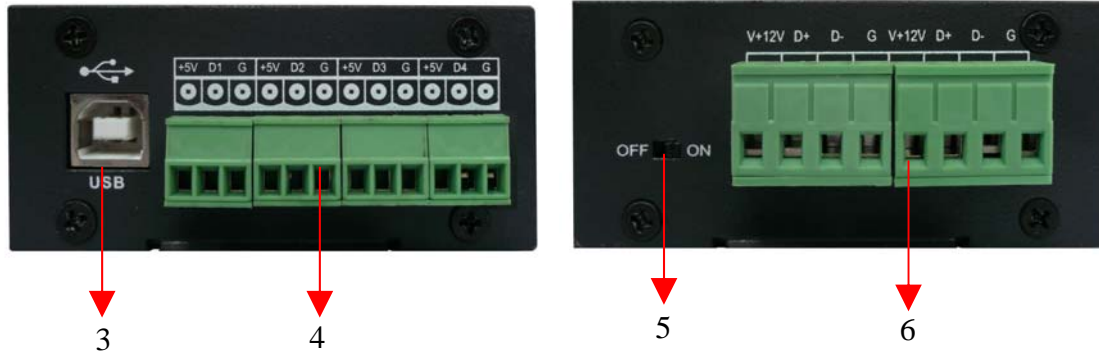


### 1-4 Panel Introduction

Front side

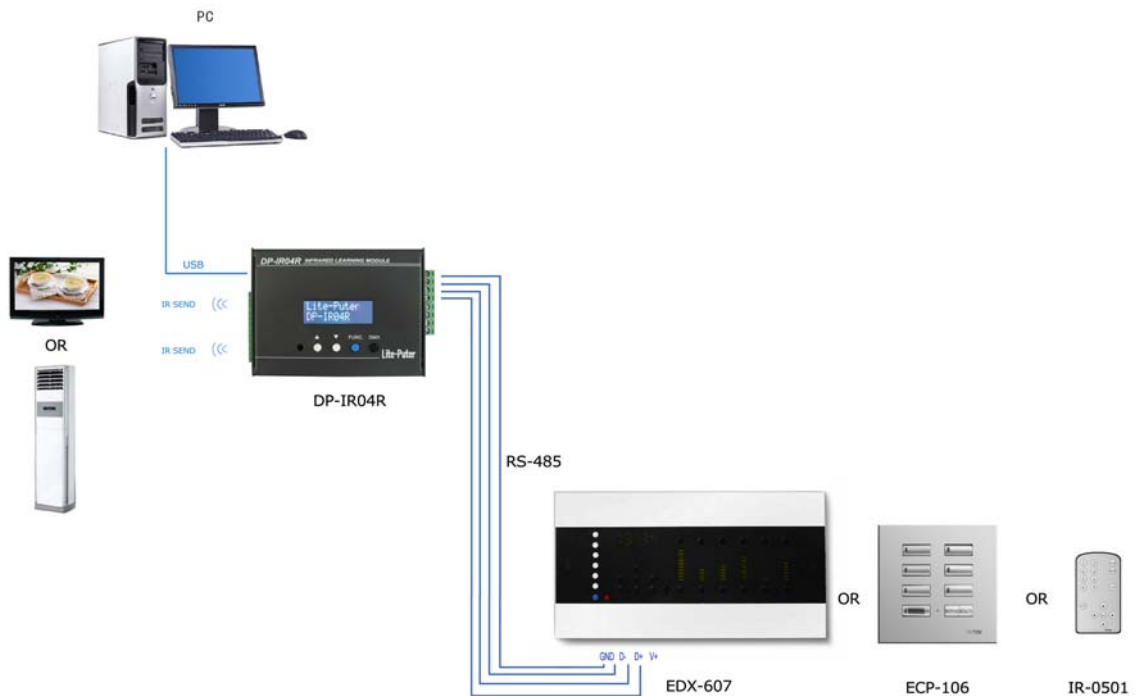


Lateral side



1	IR receive port	▲	Up button
2	LCD display	▼	Down button
3	USB port	FUNC	Function
4	IR send port	DMX	Confirm
5	Power ON/OFF		
6	Signal input port		

1-5 System Diagram



## Chapter Two Function

### 2-1 ID Setting

**STEP-1** Switch on the device and LCD will display the software version, and then it will display the main page as below,



```
Lite-Puter
DP-IR04R
```

**STEP-2** Press **【FUNC】** to enter function selection and LCD will display as below,



```
→1:SET ID001
  2:ZONE 01
```

**Notice:** ID001 is current device'ID no..If device's ID no. is 5 , it will display as 1: SET ID005.

**STEP-3** Select 1:SET IDxxx and press **【DMX】** to enter ID setting , LCD will display,



```
set ID: 001
DMX' to save
```

**STEP-4** Press **【▲】** or **【▼】** to adjust the value and then press **【DMX】** to save the setting and go back to the main page.

**Notice :** IN EDX system, each must have different ID NO..

### 2-2 Zone Setting

**STEP-1** Press **【FUNC】** to enter function selection and press **【▲】** or **【▼】** to move the arrowhead to 2:ZONE xx. LCD will display as below,

```
1:SET ID001
+2:ZONE 01
```

**Notice:** ZONE 01 is current device's ZONE no.. If device's ZONE NO. is 5,itwilldisplay as 2: ZONE 05.

STEP-2 Press **【DMX】** to enter Zone setting and LCD will display as below,

```
ZONE = 01
DMX'to save
```

STEP-3 Press **【▲】** or **【▼】** change the value, the max. ZONE no.is 99. Then press **【DMX】** to save the setting and go back to the main page.

## 2-3 IR Learning ON/OFF

STEP-1 Press **【FUNC】** to enter function selection and press **【▲】** or **【▼】** to move the arrowhead to 3:STUDY xxx .LCD will display as below,

```
2:ZONE = 01
+3:STUDY OFF
```

**Notice:** STUDY OFF means the IR learing function is OFF; STUDY ON means the IR learing function is ON. The default setting is OFF, after switching on.

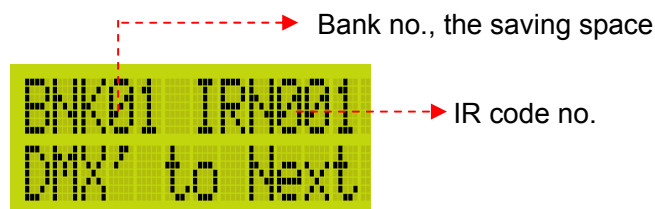
STEP-2 Press **【DMX】** to enter IR learning ON/OFF setting and LCD will display as below,

```
STUDY: OFF
DMX'TO save
```

STEP-3 Press **【▲】** or **【▼】** to select ON or OFF.

STEP-4 When the IR learning function is ON, user can point the IR remote controller to the device's IR receive port, and then press any button on the controller to send the

IR code. When the device receive this IR code, LCD will displays as below,

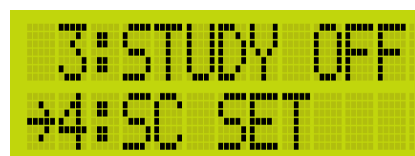


STEP-5 Press **【▲】** or **【▼】** to choose this IR code’s saving space, it can saved to BANK1 to BANK16 and each BANK can save 1 to 128 IR codes. Then press **【DMX】** to save the setting and go back to the main page.

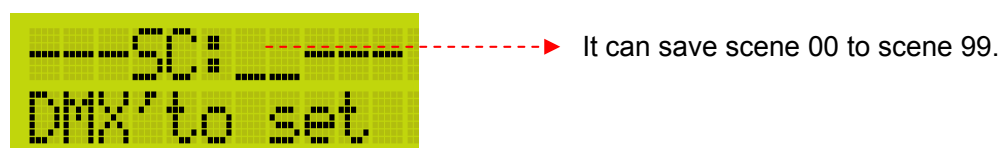
**Notice:** Repeat STEP-4 and STEP-5 to learn more IR codes.

## 2-4 Scene Setting

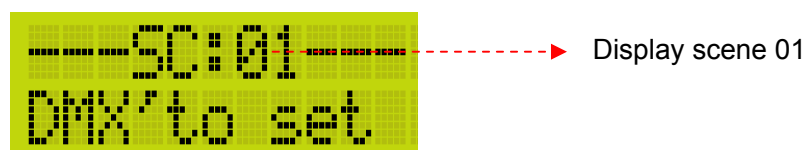
STEP-1 Press **【FUNC】** to enter function selection and press **【▲】** or **【▼】** to move the arrowhead to 4:SC SET. CD will display as below,



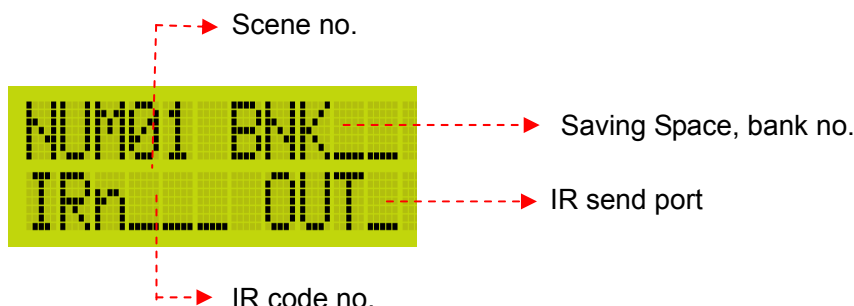
STEP-2 Press **【DMX】** to scene setting and LCD will display as below,



STEP-3 Press **【▲】** to **【▼】** select the scene. For example, select scene 01 and LCD will display as below,



STEP-4 Press **【DMX】** again and LCD will display as below,



**STEP-5** Press【DMX】to shift the setting from the saving space(BNK, from bank 1-16), IR code (IRN, from 1-128) to IR send port (OUT). Press【▲】or【▼】to adjust above values. (The device has 4 IR send ports, when the port 0 is selected, the 4 ports will send the IR code at the same time.)

**Notice:** When do the scene setting, the IR codes must be the ones already saved in the device.

## 2-5 Scene Synchronization ON/OFF

The definition of scene synchronization: When several EDX controller devices in the same system, they can recall the scenes of other EDX controllers that in the same zone. All Lite-Puter’s EDX controller device has this function, like EDX-607.

Notice: DP-IR04R must work with EDX system. When its scene synchronization function is ON, it will synchronize with controller’s scene recall; when its scene synchronization function is OFF, it will not synchronize with controller’s scene recall, which will not influence the controller’s scene recall.

**STEP-1** Press 【FUNC】 to enter function selection and press 【▲】 or 【▼】 to move the arrowhead to 5:SC SYN xxx. LCD will display as below,



**STEP-2** Press 【DMX】 to the setting and LCD will display as below,



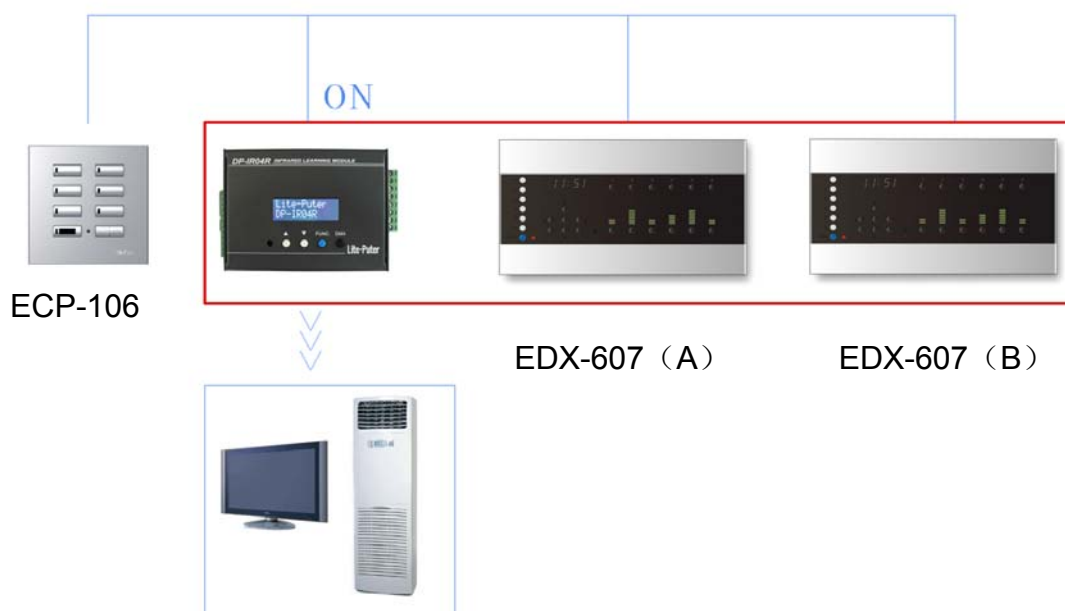
Display OFF or ON

STEP-3 Press **【▲】** or **【▼】** to select ON or OFF and then press **【DMX】** to save the setting and go back to the main page.

For example,

The system includes two EDX-607, one ECP-106, and one DP-IR04R and they in the same zone. Please check the graph as below,

1. DP-IR04's scene synchronization function is ON



EDX-607(A)'s SC1 is turn on CH1&CH2 ,

EDX-607(B)'s SC1 is turn on CH7&CH8

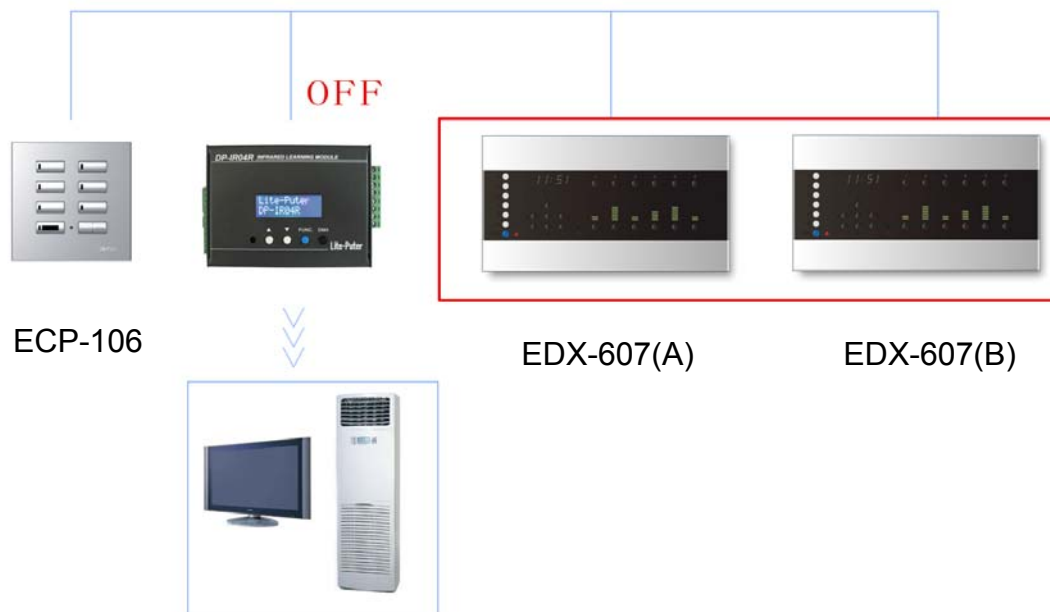
DP-IR04R's SC1 include two IR codes: turn on TV and turn on air-conditioner.

Because the scene synchronization function of EDX-607, only press SC1 button on

EDX-607 ( A ) ,CH1 and CH 2 are turned on , and so does to the CH 7 and CH8 of

EDX-607 ( B ) . At the same time, the SC 1of DP-IR04Rwas called out too: TV and air-conditioner are turned on.

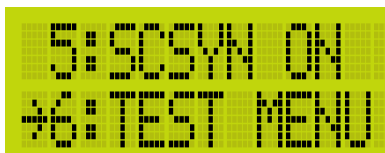
2. DP-IR04's scene synchronization function is OFF



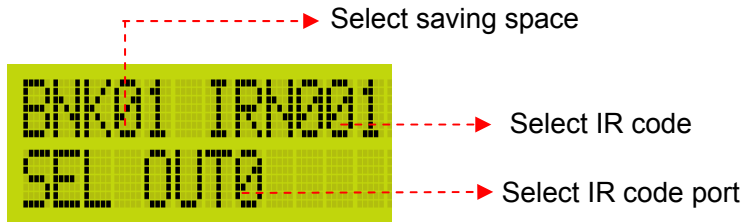
Because the scene synchronization function of EDX-607, only press SC1 button on EDX-607 ( A ) ,CH1 and CH 2 are turned on , and so does to the CH 7 and CH8 of EDX-607 ( B ) . At the same time, the SC 1of DP-IR04R can't be called out. Only press the SC1 button on control panel ECP-106, the SC 1 of DP-IR04R can be call out.

## 2-6 Sent IR code

STEP-1 Press **【FUNC】** to enter function selection and press **【▲】** or **【▼】** to move the arrowhead to 6: TEST MENU. LCD will display as below,



STEP-2 Press **【DMX】** to the setting and LCD will display as below,



**STEP-3** Press **【DMX】** to shift the setting from the saving space (BNK, from bank 1-16), IR code (IRN, from 1-128) to IR send port (OUT). Press **【▲】** or **【▼】** to adjust above values.

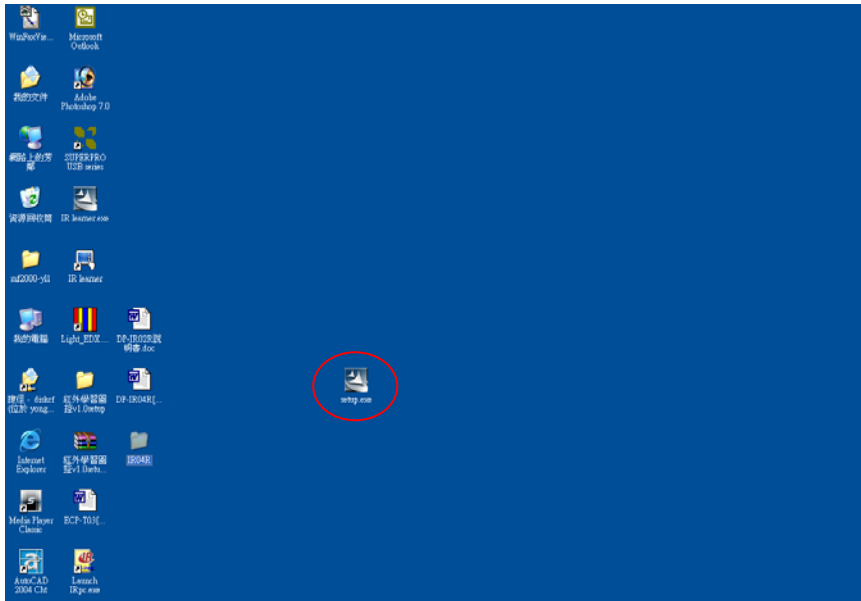
For example, send IR code (IRN001) of Bank 01(BNK 01) from IR send port 4 (OUT4). Press **【▲】** or **【▼】** to change above values as below and press **【DMX】** to send this IR code.



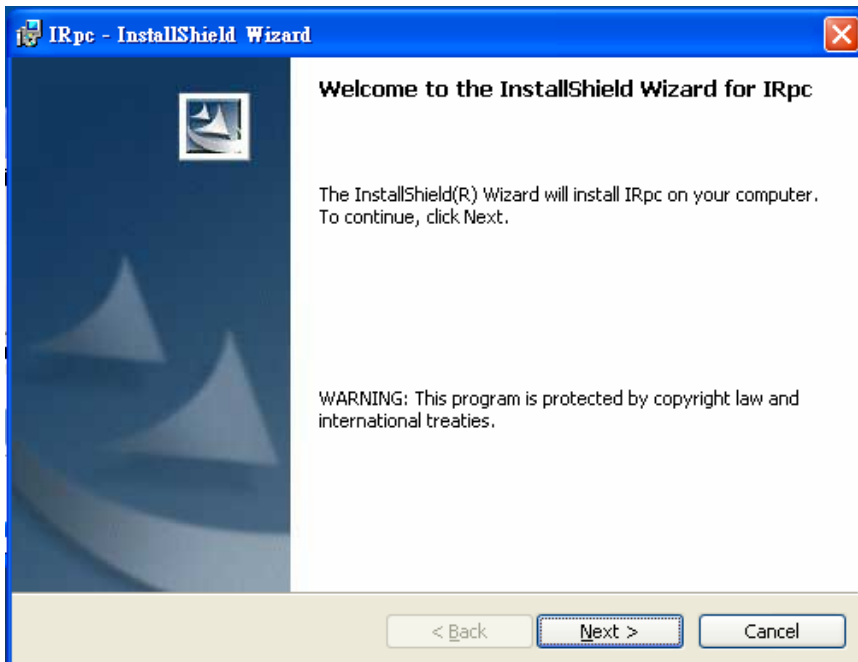
# Chapter Three DP-IR04R's Control Software Introduction

## 3-1 Control Software Installation

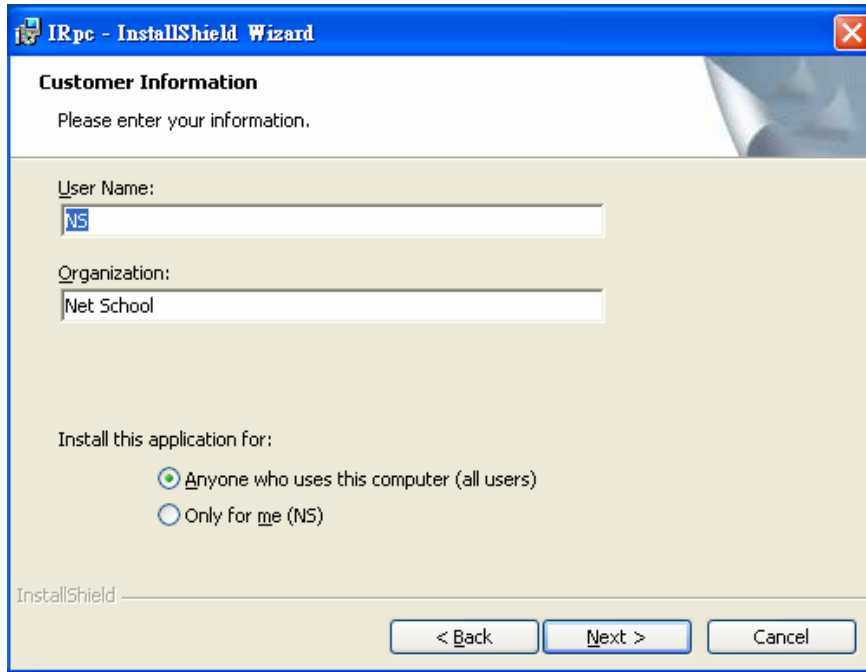
**STEP-1** Copy the installation file from the CD to the desktop and it will display as below,



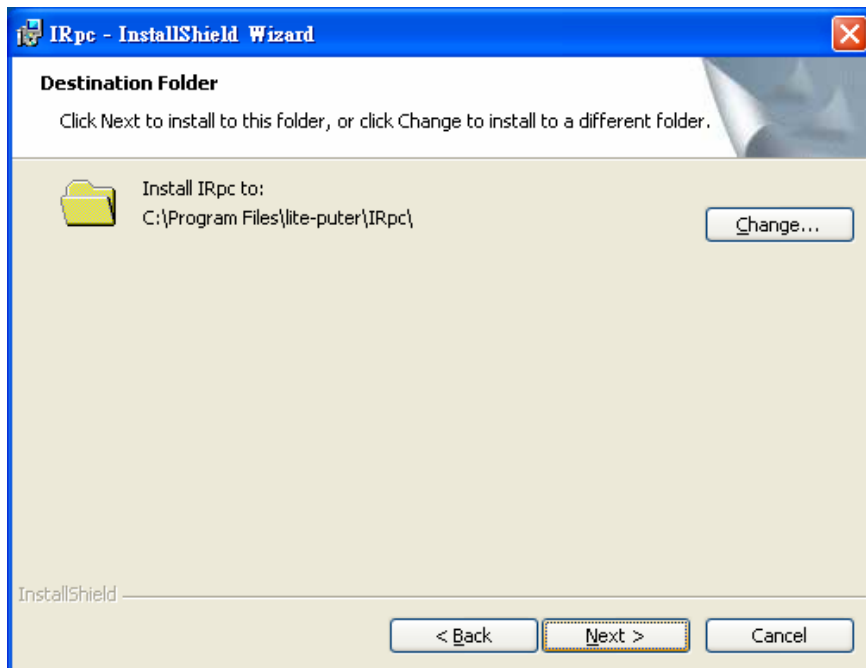
**STEP-2** Double click the icon and it will display as below,



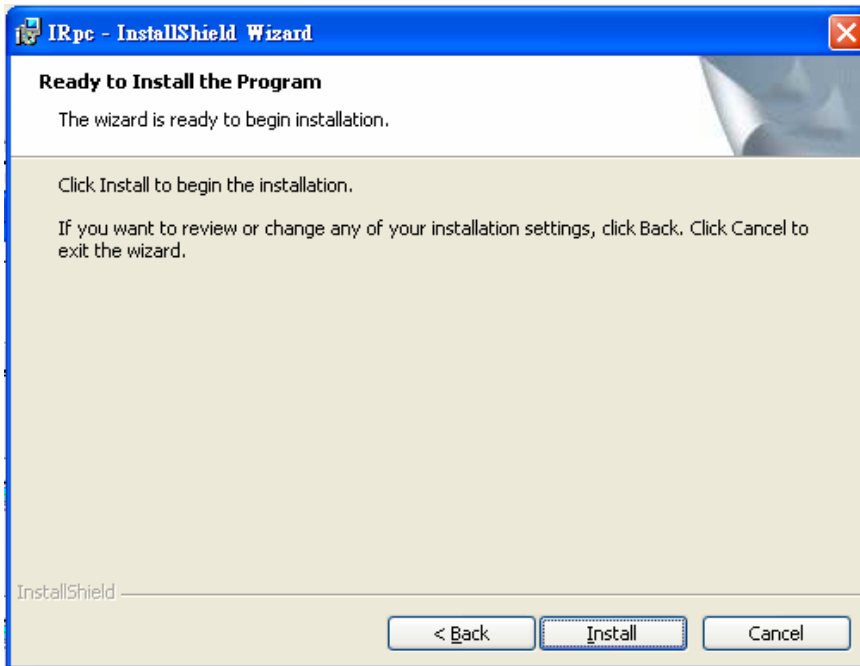
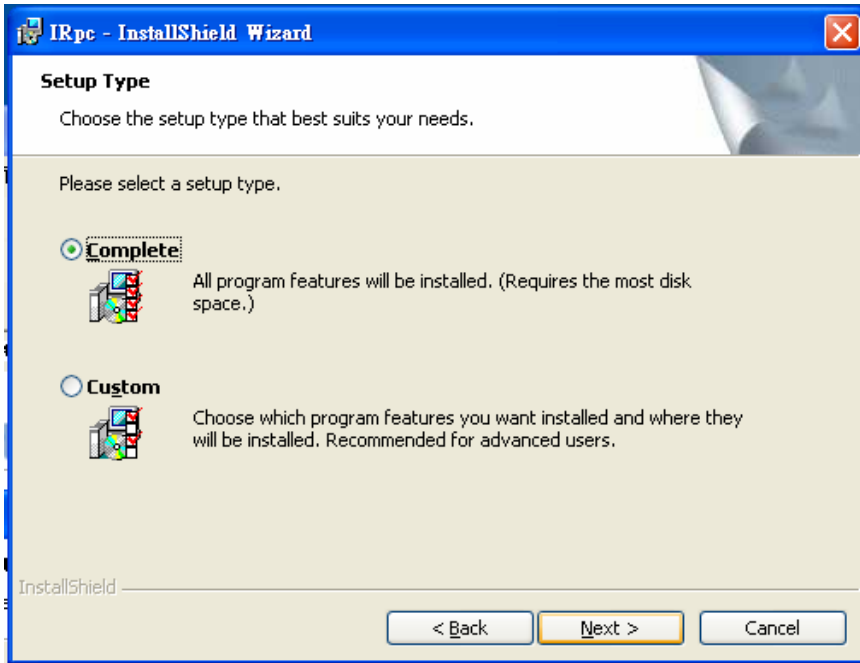
**STEP-3** Press Next, it will pop up Customer Information dialogue box as below,



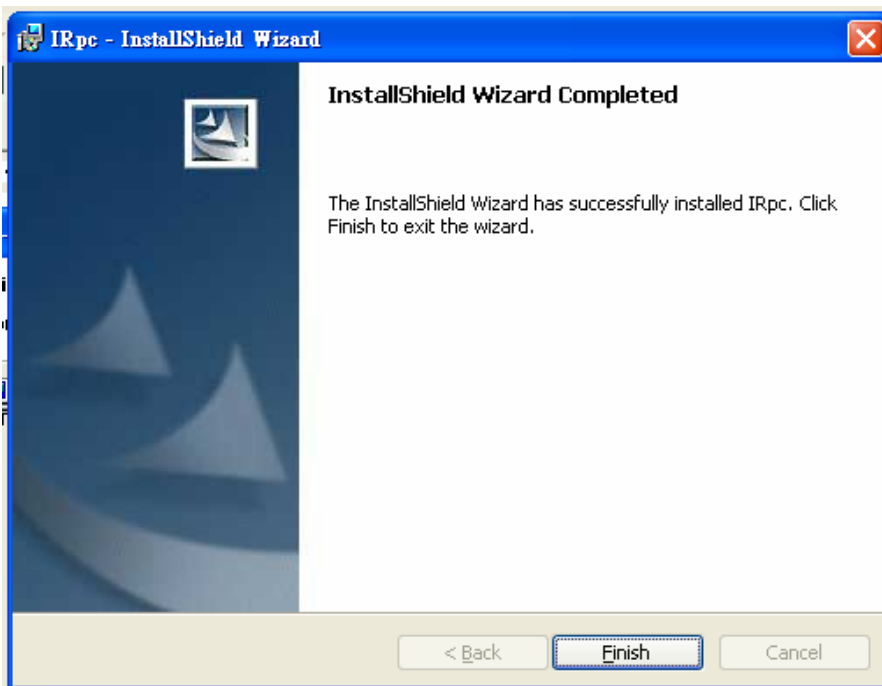
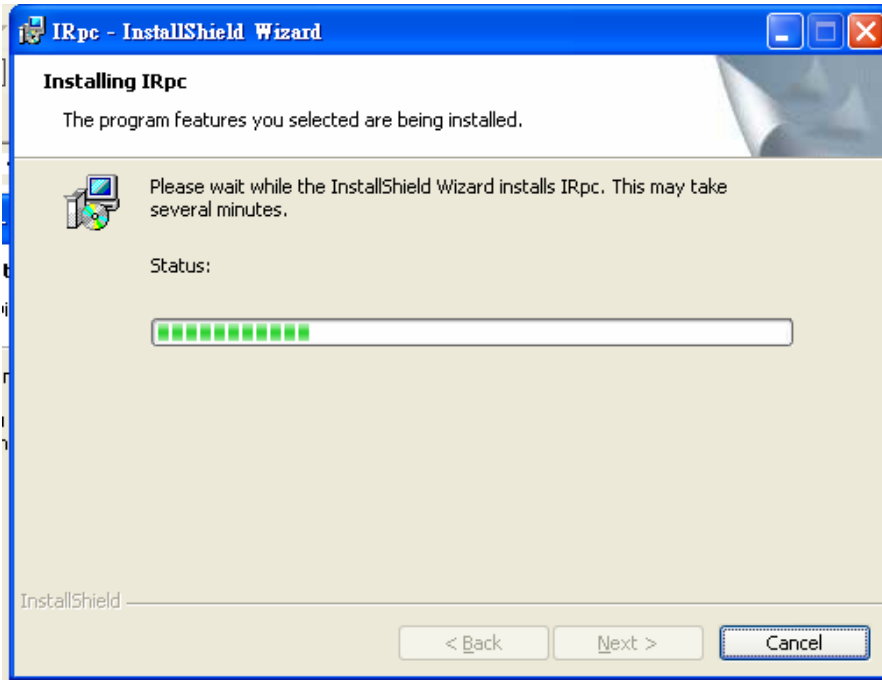
STEP-4 Press Next to select install destination.



Press Next, it will display as below,

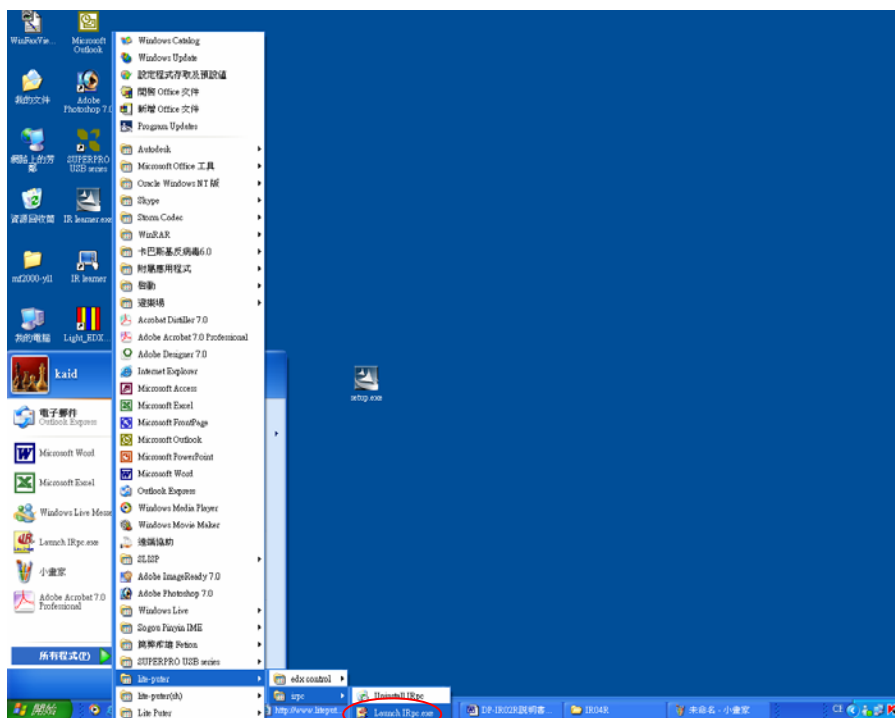
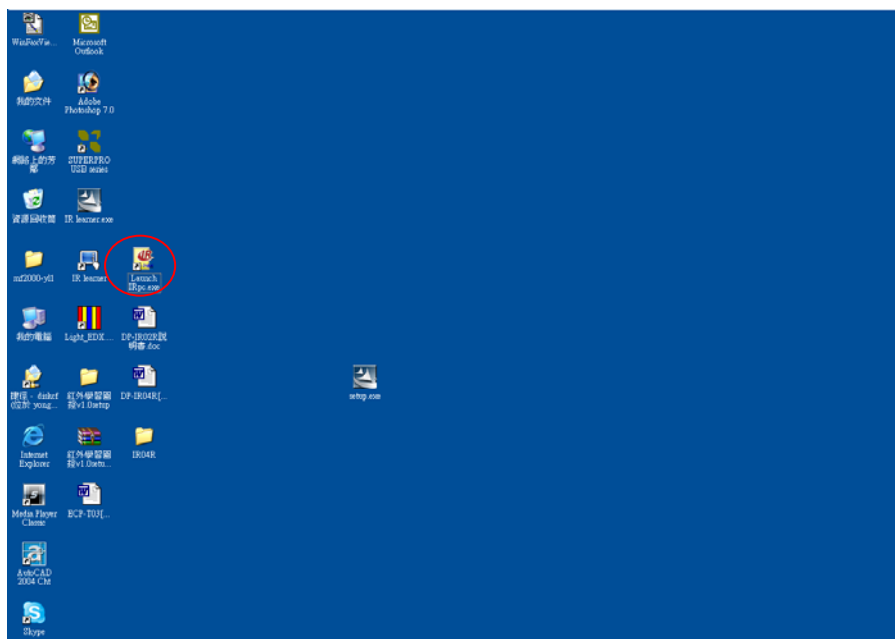


Press install, it will display as below,



Press finish to complete the control software installation.

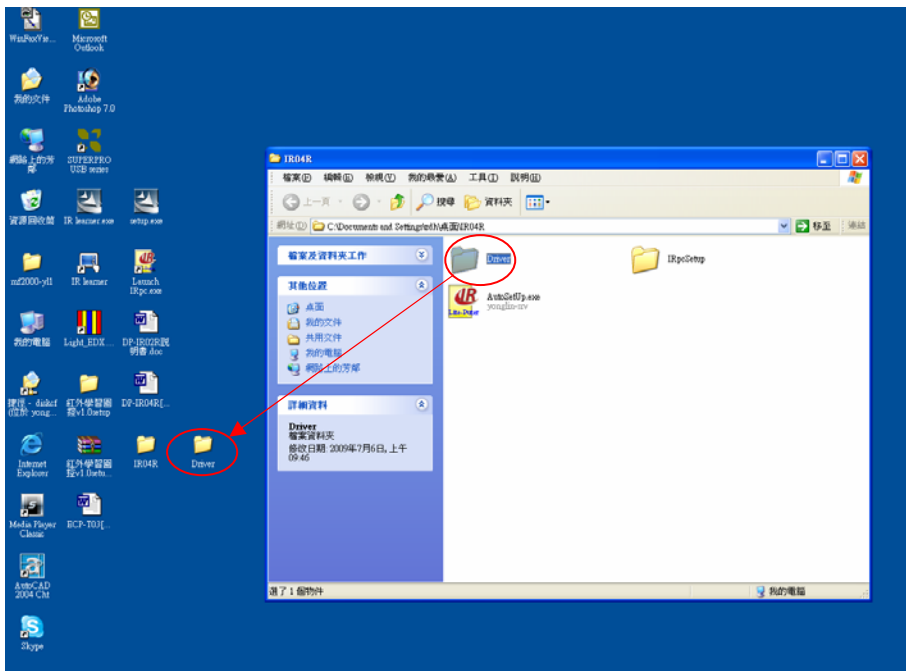
**STEP-5** After installation, from the shortcut on desktop to run it or from Start → All program → Lite-puter → Launch IRpc.exe to run it . It will display as below,



### 3-2 Device Driver Installation

After control software installation, next step is device driver installation.

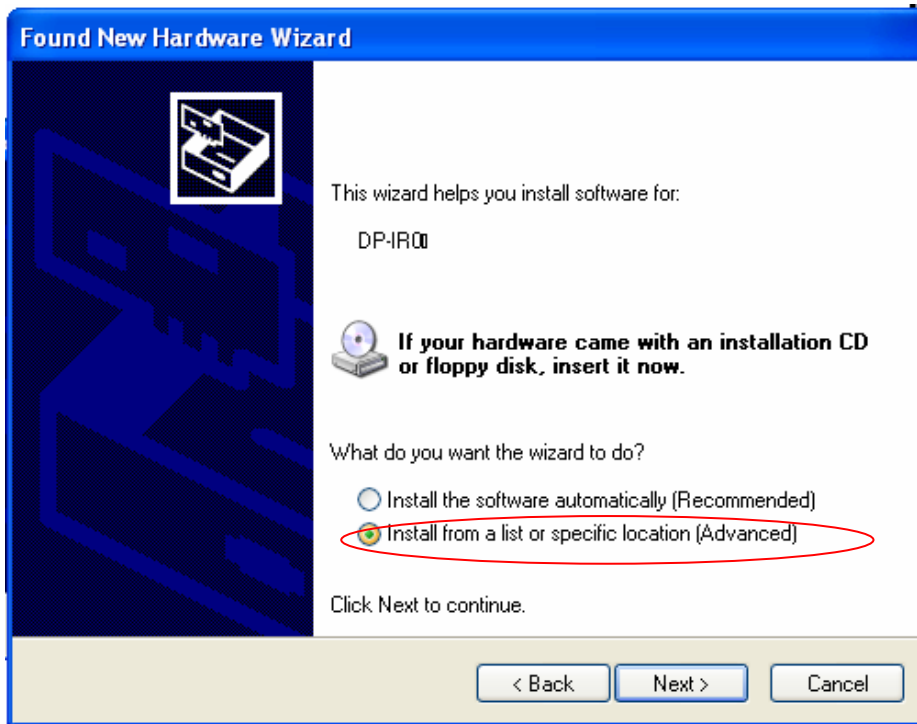
**STEP-1** After install control software correctly, go from desktop→my computer →disk C → PROGRAM FILES →LITE-PUTER →DRIVER and copy the DRIVER to the desktop . It will display as below,



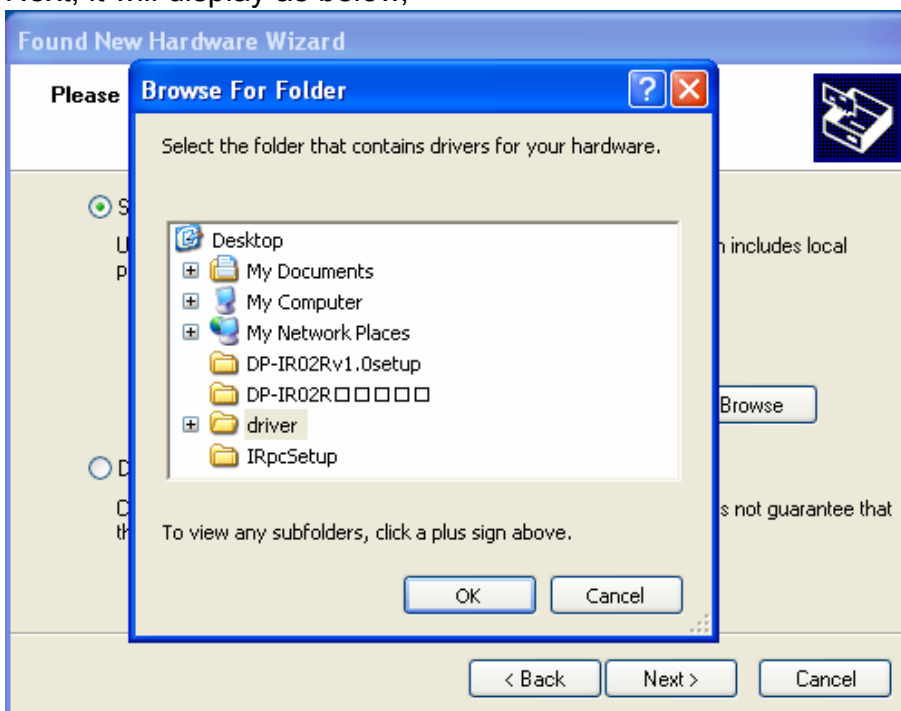
**STEP-2** Connect the device with PC by USB line and it pops up the dialogue box as below,



**STEP-3** Select “No, not this time” and then press “Next”, it will display as below,

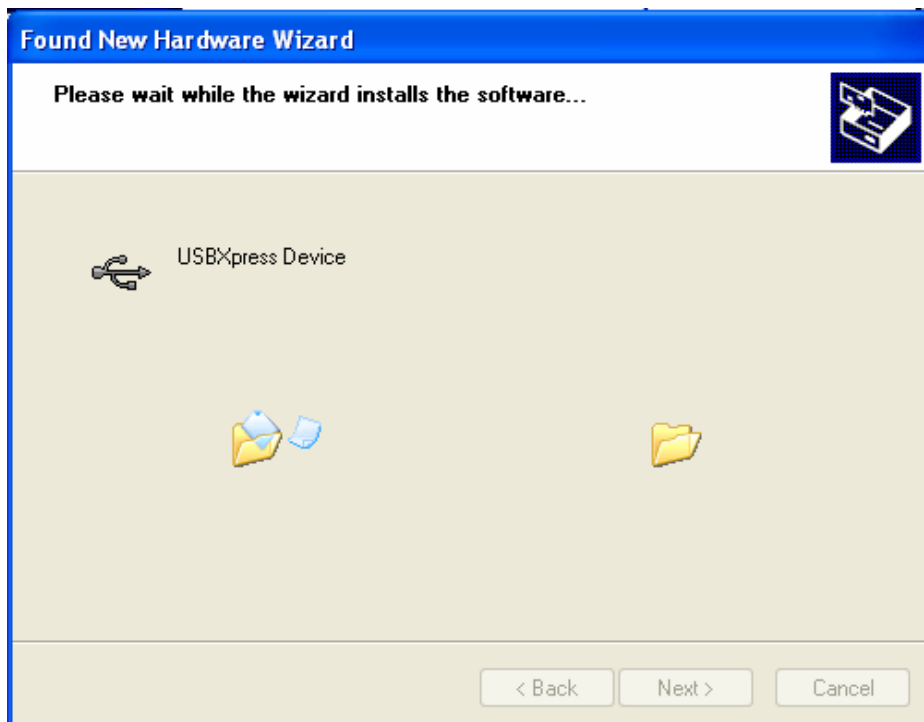


STEP-4 Select “Install from a list or specific location (Advanced)” and then press Next, it will display as below,



Select the driver folder and then press ok.

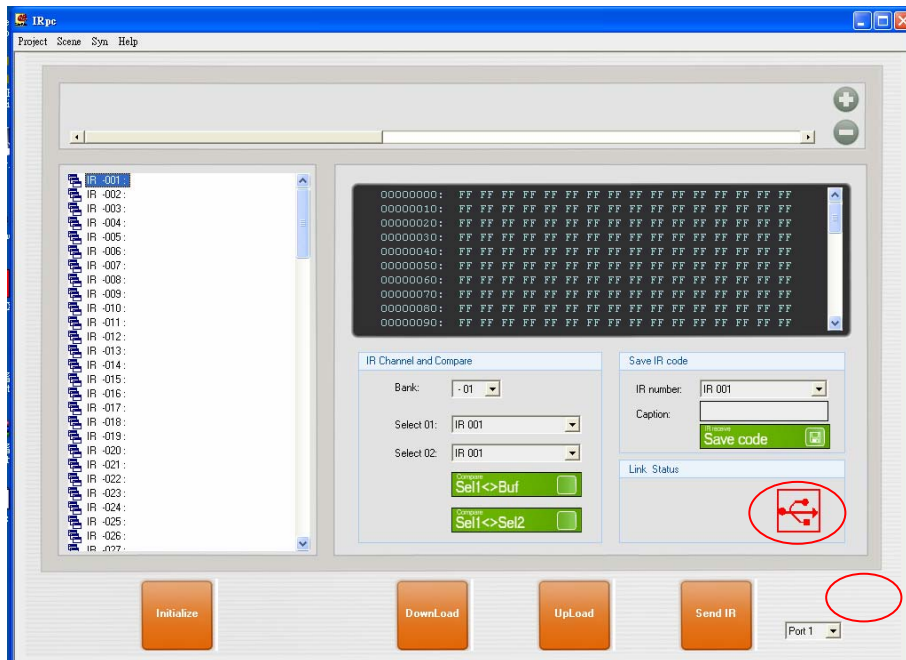
STEP-5 Press Next, it will display as below,



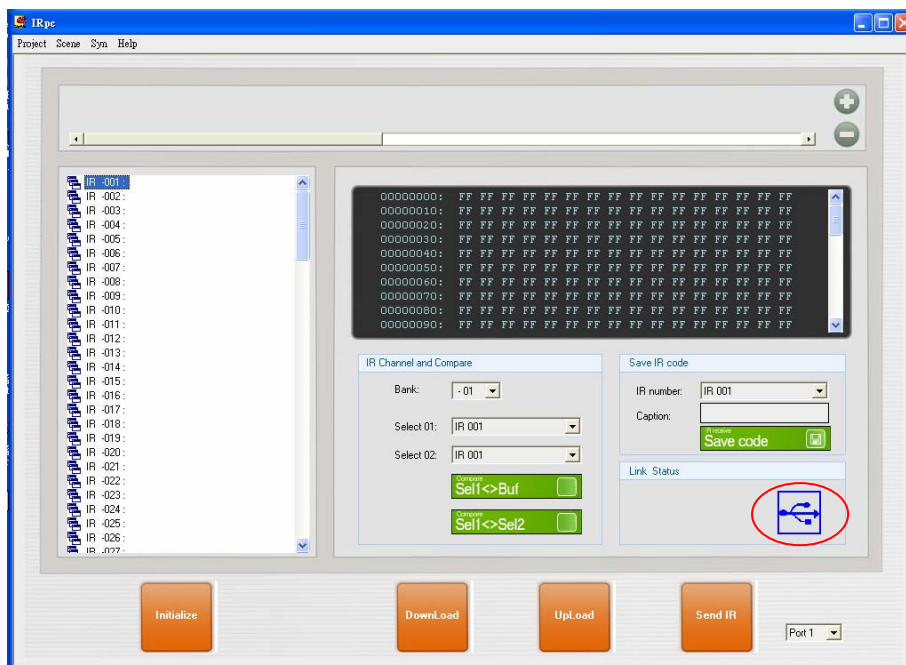
Press finish to complete driver installation.

### 3-3 Connection between Device and Control Software

Open the control software and it will display as below,  
 Graph 1 : Device is disconnected with control software

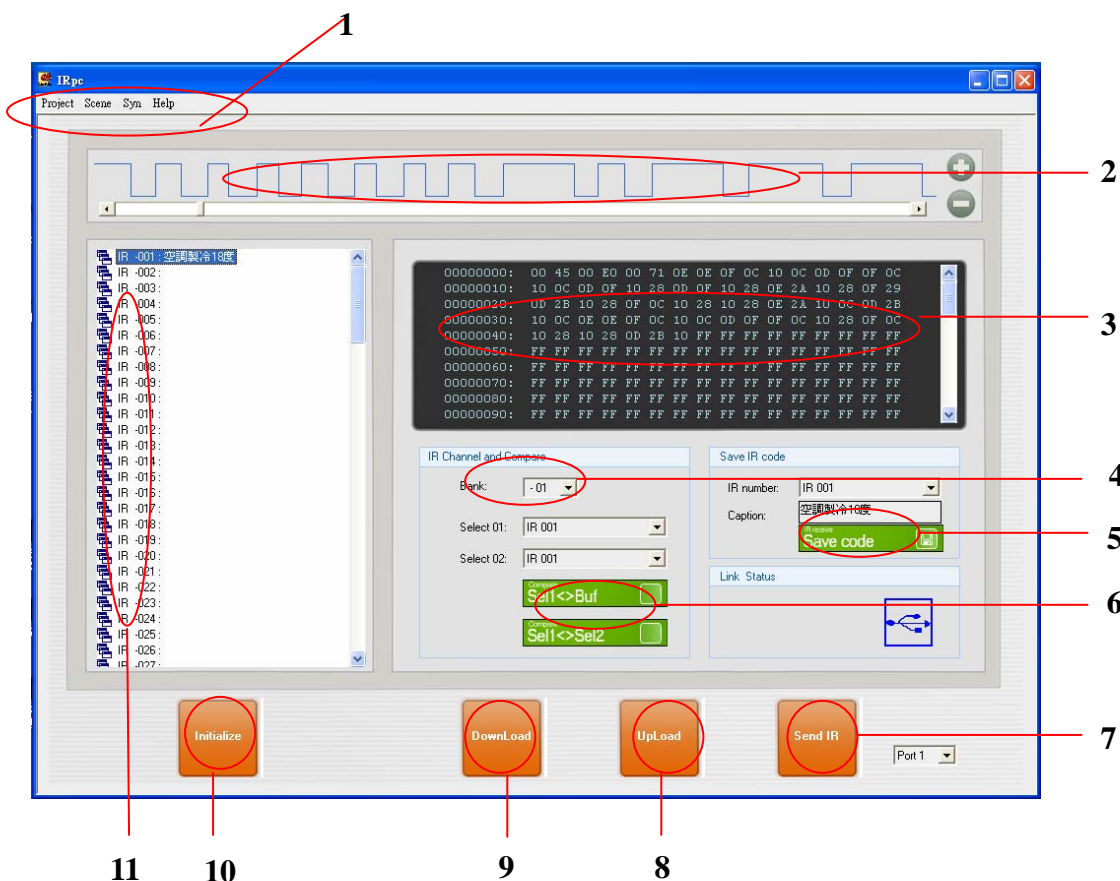


Graph2 : Device is connected with control software by USB



### 3-4 Control software menu introduction

STEP-1 After installation, from the shortcut on desktop to run it or from Start → All program → Lite-puter → Launch IRpc.exe to run it . It will display as below, (Please refer to 3-1 STEP-5)

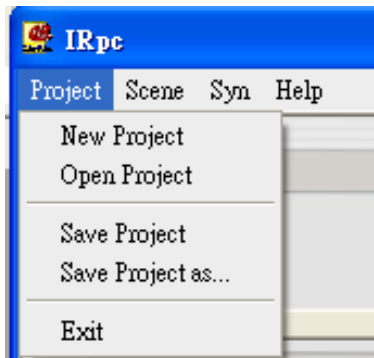


1. Menu
2. Current IR code waveform
3. Current IR code data
4. BANK
5. IR code name
6. compare IR code
7. Play IR code
8. upload all IR code
9. download all IR code
10. Initialize (delete all data in the device)
11. IR code list

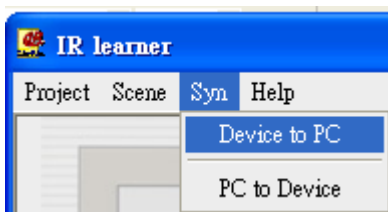
### 3-5 Control software menu introduction



1. Project ——make new project, open and save project.

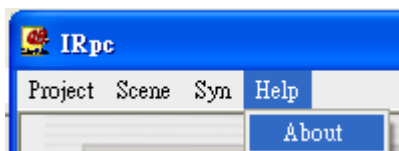


2. Scene: scene setting, please refer to 3-4
3. Syn: upload and download the IR code.



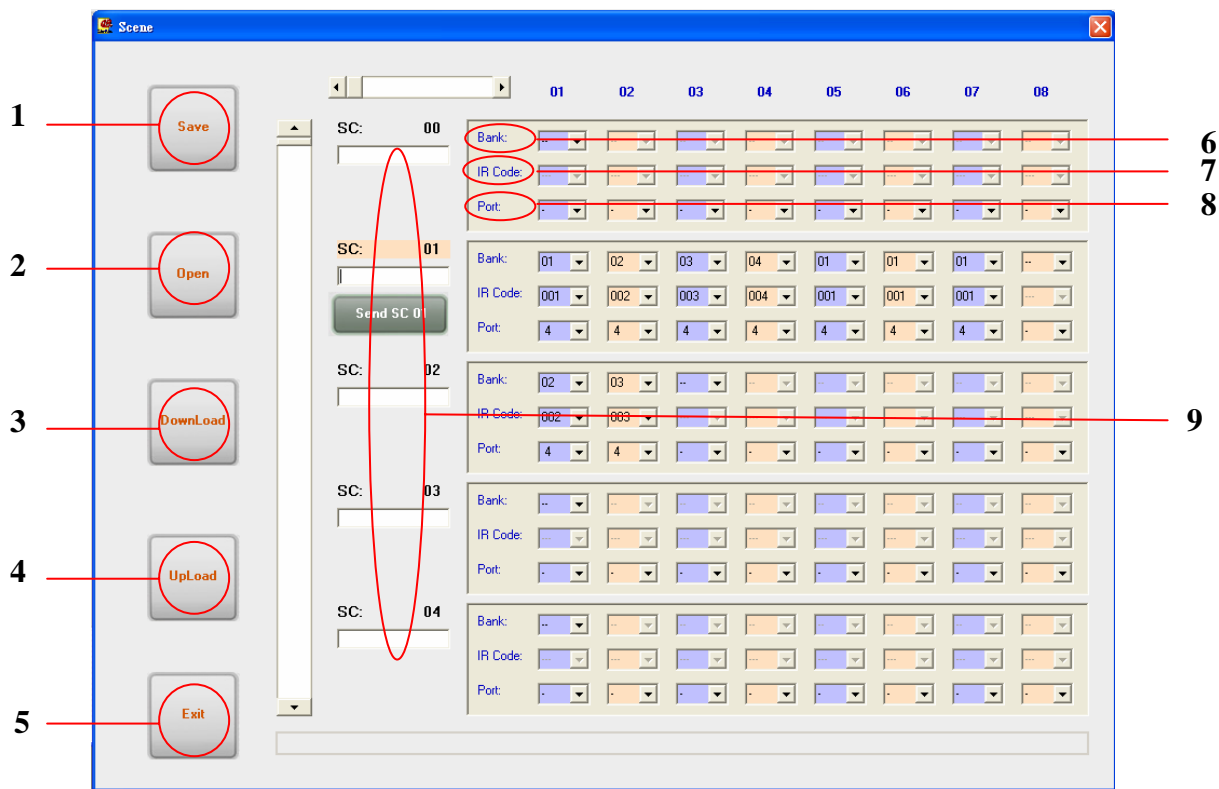
- Upload the All IR code on device to PC
- Download the All IR code on PC to device

4. Help: software version inform:



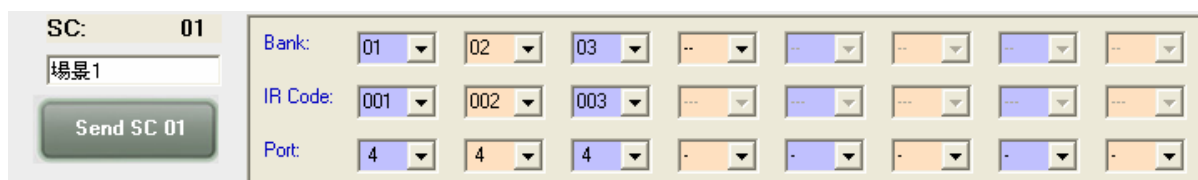
### 3-6 Scene Setting

STEP-1 Press Scene on the control software interface and it will display as below,



1. Save
2. Open the recorded setting
3. Download the All IR code on PC to device
4. Upload the All IR code on device to PC
5. Exit
6. Bank
7. IR Code
8. Port
9. Scene (00-99)

STEP-2 Select the scene no. from 00 to 99 first and then select bank no. (bank) , IR code no. (IR Code) and IR send port (port) . For example, do the scene 1 setting as below and then press **Send SC 01** , the IR code on scene 1 will be sent to the devices( controlled by IR like TV or air-conditioner) by DP-IR04R.



STEP-3 After scene setting, press DownLoad to save the setting in DP-IR04R.

STEP-4 When there is scene already saved in DP-IR04R, press UpLoad to read the setting to the control software. For example, the scene 2 include 3 IR codes, 001, 002, 003 from bank 01, 02, 03 separately and their IR send port is 4, it will display as below,

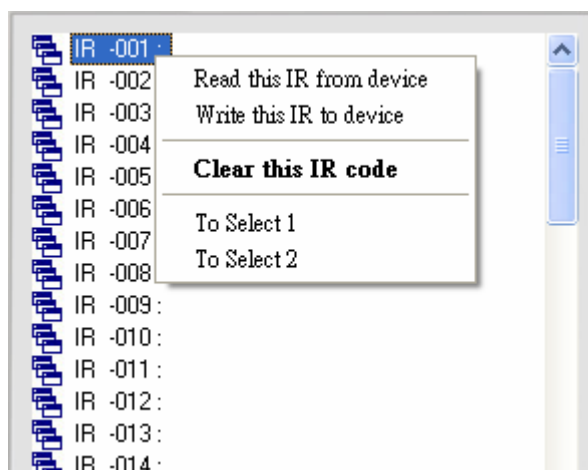



STEP-5 After scene setting or reading the scene setting on control software, press save to save the setting in PC.

**Notice:** if you only save the scene setting on PC, it will not interfere with the setting in DP-IR04R.

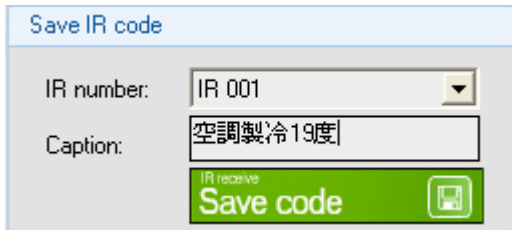
### 3-7 IR Code Setting

STEP-1 On the interface, right click one IR code on IR code list area it will display function list as below,

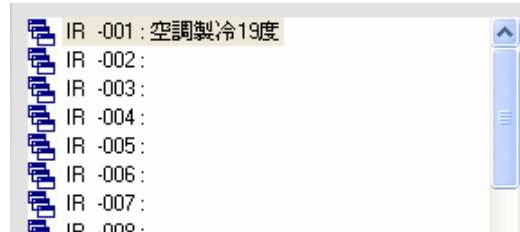


STEP-2 If select read this IR from device from the function list, user can name this code on IR code name area as below, For example , For example, name IR001as air conditioner at 19°C (show as graph 2–1) and then press  to



show the name at IR code list area(show as graph 2-2) ,

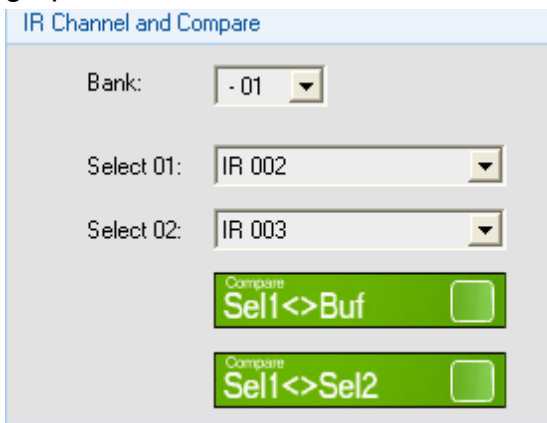


(Graph 2-1)

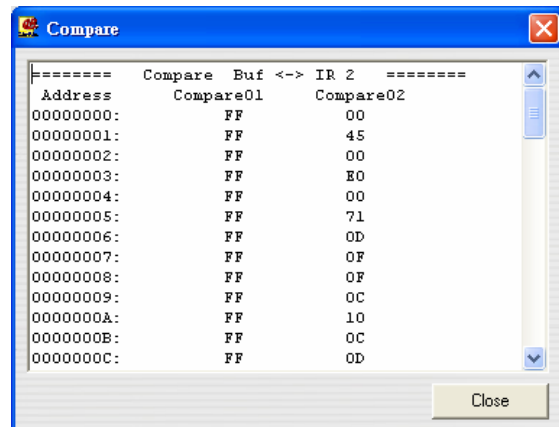


(Graph 2-2)

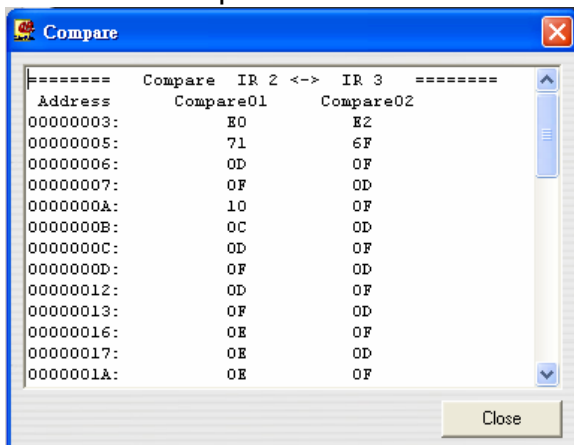
STEP-3 Right click any IR code and press To select 1 or To select 2 to compare the IR codes. For example, Chose IR002 to select01 column and choose IR003 to select 02 column ( show as graph 3-1 ) , then press  to compare IR002 on select01 column with the IR code on current IR code data on control software interface area 3 and it will display as graph 3-2. Press  to compare IR002 on select01 column and IR003 on select02 column and it will as graph 3-3.



(Graph 3-1)



(Graph 3-2)

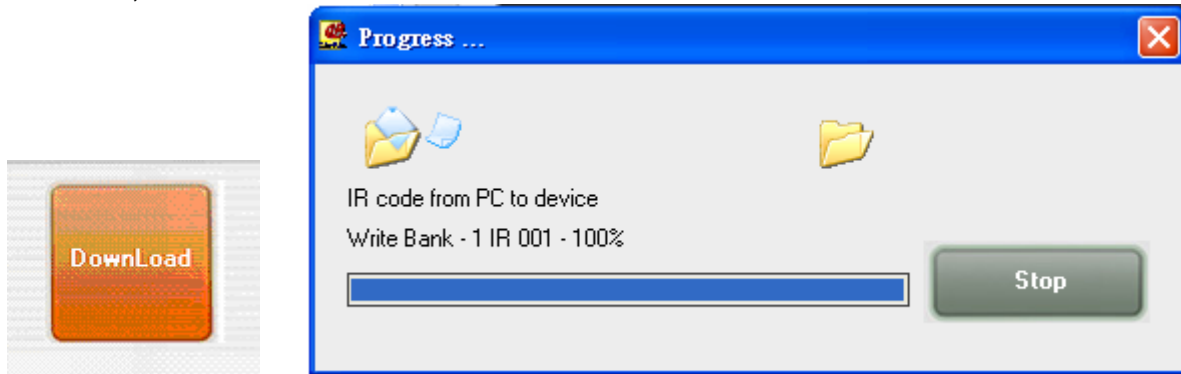


(Graph 3-3)

### 3-8 Upload & Download IR Code

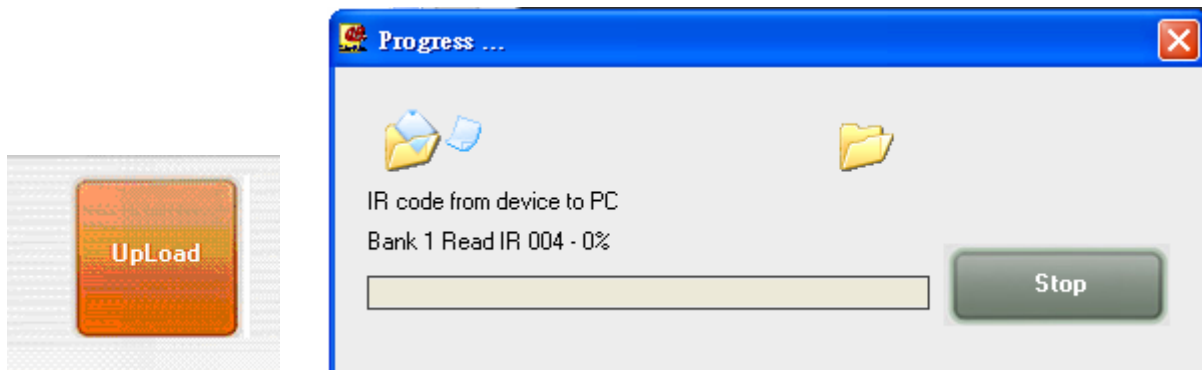
**STEP-1** Press DownLoad to save the IR code on the bank from PC to DP-IR04R.

For example, select the bank 01 on  ( the area 4 on the control software interface) to save IR code on bank 01 to DP-IR02R and it will display as below,



**STEP-2** Press Upload to save the IR code on the bank from DP-IR04R to PC. For

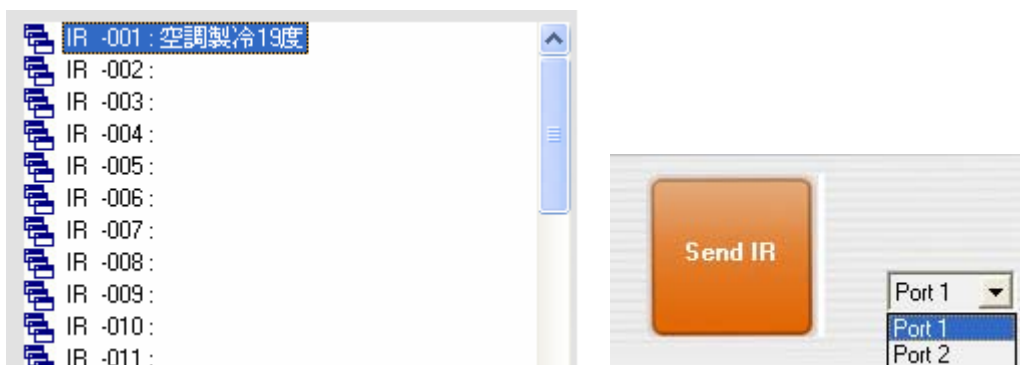
example, select the bank 01 on  ( the area 4 on the control software interface) to save IR code on bank 01 to PC and it will display as below,



### 3-9 Send IR Code

**STEP-1** Select the bank no. and IR code no., and then select the port to send the IR code.

For example, select IR001 from  and select port 1 and then press send IR to sent it out. It will display as below,



## Guarantee

Lite-Puter promises to fulfill the following acceptances:

1. Lite-Puter is only responsible for DP-IR04R itself.
2. Lite-Puter guarantees to keep Lite-Puter's fault products caused by techniques, materials and any other logical reasons in good repair for free within a year since the distributing date.
3. We do not offer door-visiting service. If the trouble appears in Lite-Puter's products, please deliver the equipment to local distributors or Taipei headquarter.

### \*\*\* Special Statement\*\*\*

Any fault caused by false usage, imprudence (collision or inadequate installation) or force majeure factors are not in Lite-Puter's service.

#### Revision Record

Version	Record
A	First version
B	Change product photo

Issued on: August, 2009

## Lite-Puter

**World Headquarter:**

Lite-Puter Enterprise Co., Ltd.

Address: 9F, No. 196, Sec. 3, Da Tung Rd., Shijr City, Taipei, Taiwan

Zip Code: 22103

Tel: +886-2-86472828

Fax: +886-2-86472727

Website: [www.liteputer.com.tw](http://www.liteputer.com.tw)

E-mail: [sales@liteputer.com.tw](mailto:sales@liteputer.com.tw)

**Shanghai Factory:**

Lite-Puter Technology (Shanghai) Co., Ltd.

Address: Building B5, No. 298, Lane 3509, Hongmei S. Road, Shanghai, China

Zip Code: 201108

Tel: +86-21-54408210

Fax: +86-21-64978079

**Shanghai Sales Center:**

Address: Room 701, Building Gem, No. 487, Tianlin Road, Shanghai, China

Zip Code: 201103

Tel: +86-21-33674316/33674850

Fax: +86-21-33674013

Website: [www.liteputer.com.cn](http://www.liteputer.com.cn)

E-mail: [sales\\_china@liteputer.com.tw](mailto:sales_china@liteputer.com.tw)